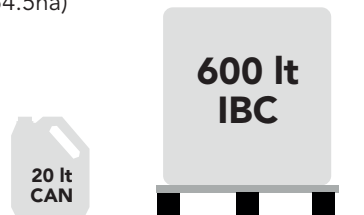


Crown MH flexible packaging to suit your business

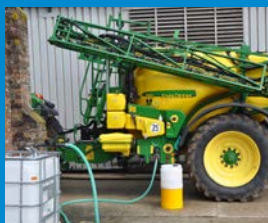
Pack sizes available in 20L and 600L IBC (1.8ha and 54.5ha)



The IBC containers operate as a closed transfer system in conjunction with the WisdomFasTran-850



The flowmeter and closed transfer coupling provides easy control and read out



FasTran unit couples to a standard sprayer fitting. It utilises the sprayer venturi system to pull product from the IBC

The key benefits of the IBC system

- Reducing fill time, the FasTran unit will transfer 25L Crown MH per minute, allowing the operator to fill the sprayer and add Crown MH at the same time. Typically giving 1-2 more loads per working day, a real benefit in covering ground during a limited weather window.
- Very low operator exposure, typically 2,000 times less than using standard packaging.
- No waste packaging issues, simply call the number on the IBC and the contractor will collect from your premises free of charge.

For further information on the FasTran-850 please contact Wisdom Systems on 01432 358032

For more information and advice speak to one of the technical team.



LAURENCE POWER
Technical Manager
East of England
power@certiseurope.com
07384 510786



HARRY RALEY
Technical Specialist
North & Scotland
rale@certiseurope.com
07408813774



HENRY WELHAM
Technical Specialist
South of England
welham@certiseurope.com
07900276385

Technical Hotline - 0845 373 0305
www.certiseurope.co.uk/crown-mh

USE PLANT PROTECTION PRODUCTS SAFELY. ALWAYS READ THE LABEL
For further information with regard to the warning phrases and symbols, please refer to the product label. CrownMH is a registered trademark of Kreglinger Europe NV. CrownMH. MAPP 19495 Certis, Suite 5, 3 Riverside, Granta Park, Great Abington, Cambridge. Tel: 0845 373 0305 Email: infocertisuk@certiseurope.com
www.certiseurope.co.uk © 2021



CERTIS
Growing Together

CROWN MH

The first part of your potato sprout control programme



Why should I use it?

- Cost effective sprout suppression for both processing and fresh crops
- Reduces secondary growth and internal sprouting.
- Reduces volunteers in following crops

Industry trials and grower experience last year have clearly demonstrated the benefits of using Crown MH as the first step in the sprout control programme.

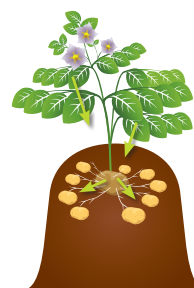
Mint oil, Ethylene and DMN have all been shown to work better following a field application of MH.

Crown MH has a low cost per tonne compared to other storage treatments.

AHDB work demonstrates that the use of MH improves shelf life of fresh potatoes regardless of subsequent storage treatments.

Getting the best from Crown MH

- Crown MH is a large molecule and needs time to be absorbed by the plant's leaves. **Avoid hot and dry conditions where the spray solution dries very quickly, or rain showers where solution can be diluted.**
- **Crown MH should be applied when temperatures are below 25°C**, and no rain is forecast or irrigation scheduled, for a minimum of 12 hours (or ideally 24 hours).
- **Experience shows an ideal timing is 3-5 weeks prior to haulm destruction when 80% of the tubers are greater than 25mm in diameter.**
- As soon as the correct parameters arrive, it should be applied – even if that means waiting until later in the window.
- Relative humidity is also an important factor – it should be above 75% and unlikely to fall for a few hours after spraying.



Crown MH moves systemically from leaf to tuber.

Crown MH application in potatoes

Label summary

- 270g/L Maleic Hydrazide liquid formulation (non-foaming)
- Maximum dose 11 L/ha
- Maximum of 1 application per year
- Latest date of application 21 days before harvest
- Apply in 300-600L water/ha
- MAPP No. 19495

Other considerations

- **Water volume is important, best results are achieved with volumes at or above 400L.** These rates delay drying time on the leaf surface and increases the uptake of MH into the plant.
- Avoid using a fungicide containing mancozeb with or before an application of Crown MH. Mancozeb can form a layer on the leaf which can significantly restrict Crown MH uptake.
- **Crown MH can be applied with Ranman Top but remember to use 400L water/ha.** There is some anecdotal evidence from 2020 field experience to suggest the Ranman Top mix may improve uptake of Crown MH.

Ideal Application Timing

